

Industrial

POLY-FLO DOUBLE
CONTAINMENT
PIPING SYSTEM

**DOUBLE
SAFETY!**



Industrial

PIPING SYSTEMS FOR INDUSTRIAL APPLICATIONS



Competence in Plastics

AGRU Kunststofftechnik GmbH is a family-owned, high performance enterprise, headquartered in Austria with worldwide activities in production and sales of high-quality thermoplastic polymer products. The product group INDUSTRIAL PIPING SYSTEMS offers a wide range of pipes, fittings, valves and special components for the transport of aggressive media. In order to cover the various operating conditions in industrial applications, a multitude of materials such as PE, PP, PVDF and ECTFE are offered. Beside the variety of piping materials, a wide choice of piping products enables the construction of pipelines in a wide range of dimensions and flow rates. Especially for the transport of aggressive and acidic media, the excellent properties of plastic piping systems ensure high durability for many years and offer the user a sustainable solution.

The installation of INDUSTRIAL PIPING SYSTEMS can be performed by means of established welding technologies such as heating element butt-, heating element socket-, infrared- and electrofusion welding. Accessories facilitate the assembling and welding machines complete the large supply programme of AGRU.

Advantages

- Uniform structure for all dimensions
- Easy handling at expansion and contraction
- Full pressure resistance
- No spacers required
- Secure and fast installation
- Cost savings compared to pre-fabricated systems
- Price advantage because of innovative production method
- The pipes and fittings are manufactured in one production process (injection molded, extruded)
- No prefabrication of pipes and fittings required
- Small space requirement of the double containment-piping system
- Low weight because of small space room (the small space room is possible because of the unique production method)
- „Directional drilling“ is possible



Quality

AGRU operates a quality management system according to ISO 9001:2008. AGRU products comply with the requirements of international standards. Continuous third party inspections assure the high quality standard.



Österreichisches Normungsinstitut
Austrian Standards Institute



Supply Range:

SUPPLY RANGE PIPES 5 M	Material
	PPR/PPR
	PE 100-RC/PE 100-RC
	Dimensions
	DIM 50/32 – SDR17/11
	DIM 90/63 – SDR17/11
	DIM 160/110 – SDR17/11

SUPPLY RANGE FITTINGS		
Elbow 90° from 2 Elbows 45°	Elbow 45° injection moulded	Tee injection moulded
Lateral Tee segmented	End Cap machined	Dog Bone end Termination
Elbow 90° from 4 segments	Elbow 45° from 3 segments	Tee segmented
Stub Flange <ul style="list-style-type: none"> without flow through with flow through with flow through + O ring 	Measuring Fitting leakage control	Reducer concentric

Other fittings are available on customer requests.



OIL AND GAS

Fracking,
Petrochemical
Exploration,
Flow-Lines



INDUSTRY

Chemical Industry,
Steel Galvanisation,
Automotive

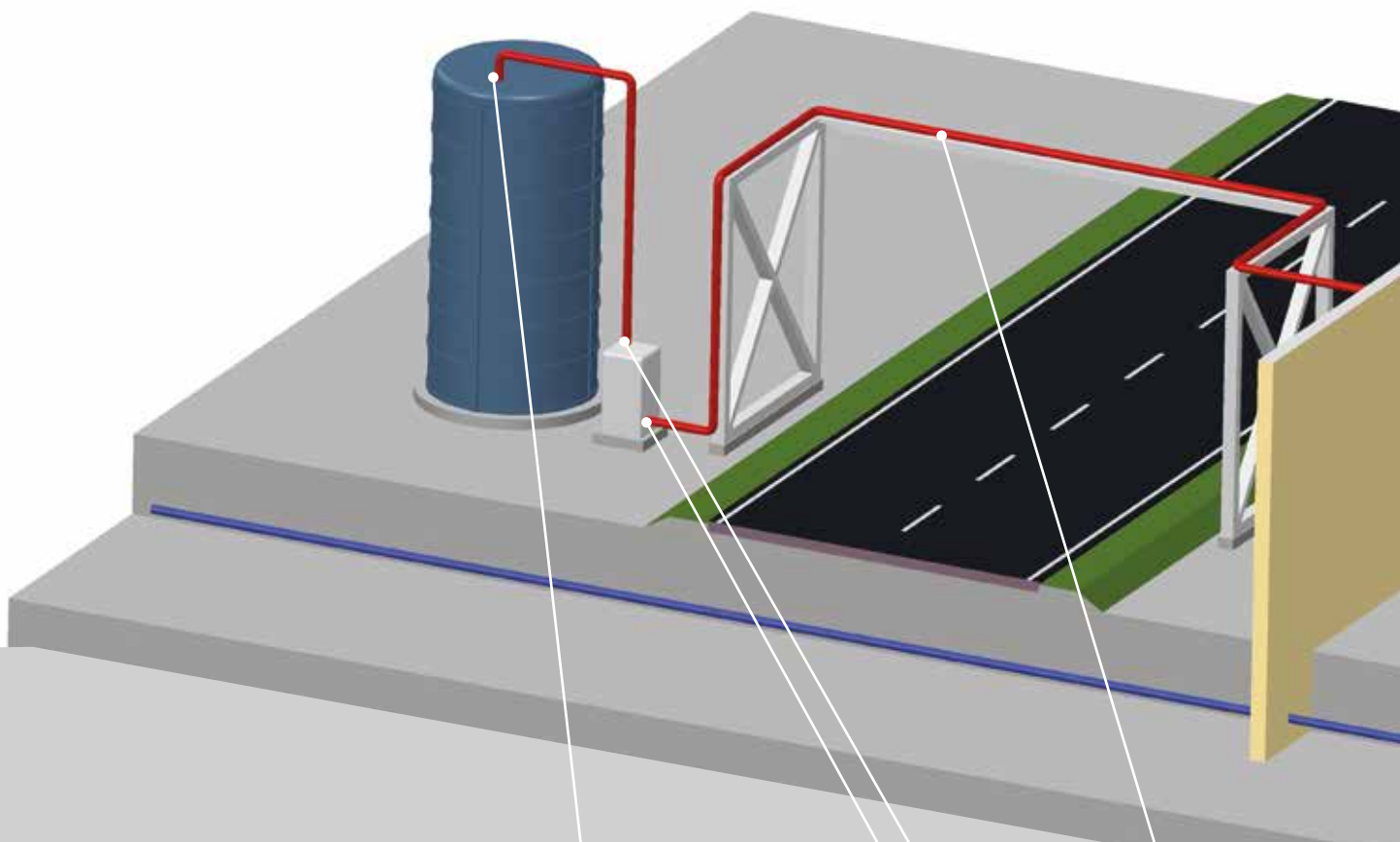


MINING



INFRASTRUCTURE

Airport,
Power plants
(Waste drain)



TYPICAL APPLICATIONS FOR POLY-FLO PIPING SYSTEMS



DOG BONE

End Termination
Transition for double
to single wall
piping systems



STUB-FLANGE

For connections
where welding is not
possible or piping
system must be
dismountable



POLY-FLO PIPE

PPR grey and
PE 100-RC black,
suitable for above
and underground
installation





FOOD AND BEVERAGE

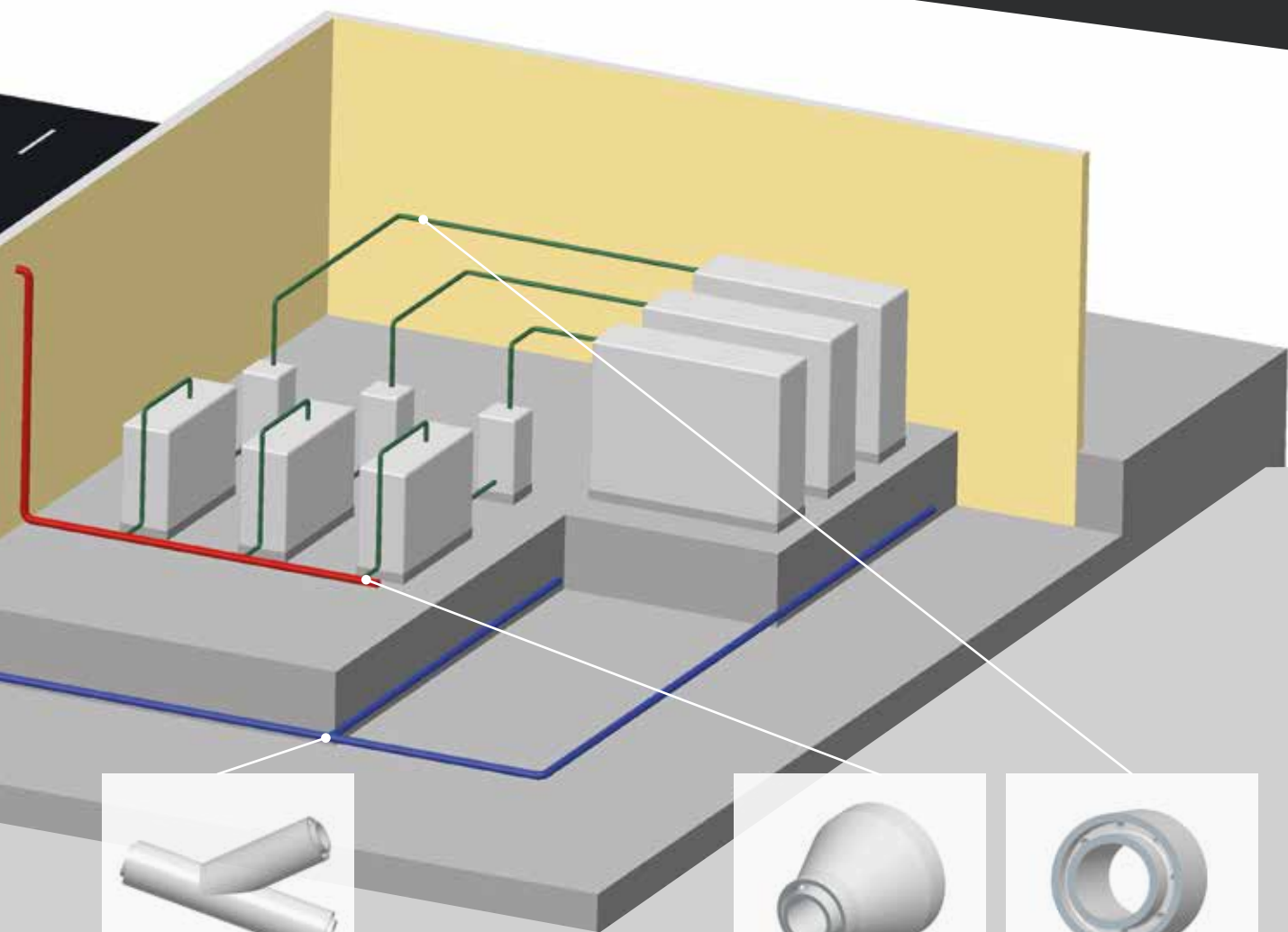
Microelectronic,
Life-Science Industry,
Laboratories,
Waste drain pipe,
Chemical process
piping



WATER AND WASTE WATER TREATMENT

Chemical feed lines,
Chlorination pipes

APPLICATION AREAS FOR POLY-FLO PIPING SYSTEMS



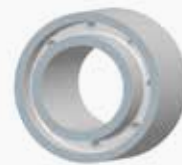
LATERAL TEE

Specially for
drainage applications
with perfect flow



REDUCER

Machined for
transition for large
to small diameter



DOG BONE

Fixing of the piping
system for higher
temperature
differences



Piping system with double safety

The AGRU double containment pipes have been used very successfully in a wide range of applications since many years. They fulfil today's high requirements in the field of chemical process engineering. Our new Poly-Flo system is an enlargement of our double-containment piping system which has proven its worth over years. For leak detection in the double containment piping, different leak detection methods are offered and they are installed in the space between inner and outer pipe. The simultaneous welding (heating element butt welding method) is the most used connection type for piping components and ensures an easy and cost-effective installation. Beside this welding method also other connection technologies are available in the supply range from AGRU.

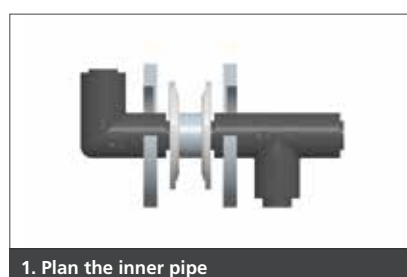
AGRU double containment piping systems ensure a system which is perfectly designed and adapted for the application (high pressure resistance of the media pipe, materials which are resistant to the transported media). Furthermore, space-saving options with reduced space for the leak detection are available.



Poly-Flo welding method

Simultaneous welding

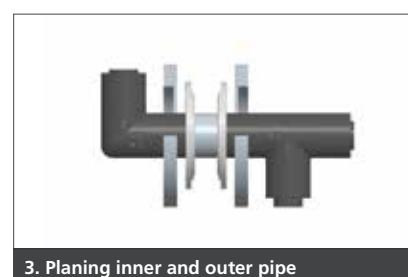
The simultaneous welding is used successfully for the AGRU double containment piping systems since many years. This welding method is also applicable for our new Poly-Flo system. The main advantages of this welding method are the fast installation time and the possibility of using standard butt welding machines.



1. Plan the inner pipe



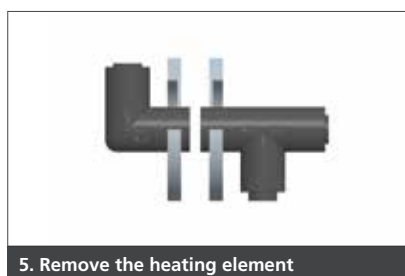
2. Alignment check



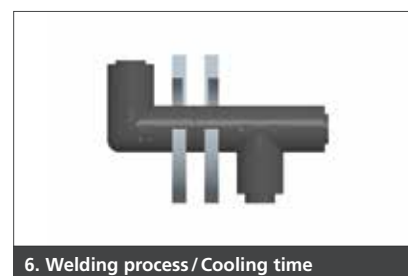
3. Planing inner and outer pipe



4. Warm up of the welding areas



5. Remove the heating element



6. Welding process / Cooling time



Simultaneous welding



Y21001020915HS

Your distributor:

SDT TECHNOLOGY DEVELOPMENT SUPPORT CO. LTD.

Hanoi Office: Him Lam Business Center, 21st Fl., Capital Tower,
109 Tran Hung Dao Str. Hoan Kiem Dist., Hanoi, Vietnam
Tel : (84-4) 3792 1548 Fax : (84-4) 3792 1549
Warehouse & Logistic in Hanoi: Kho F, TT Dich Vu Co Dien, Km12
Ngoc Hoi Street, Thanh Tri District, Hanoi

HCMC Office: INDOCHINA Park Tower, 4 Nguyen Dinh Chieu Str.,
Dakao Ward, District 1, Ho Chi Minh city, Vietnam
Tel : (84-8) 7304 5155 Fax : (84-8) 2220 0823
Warehouse & Logistic in HCMC: A27 Bis, To Ky Street,
Trung My Tay Ward, Dist. 12, HCMC

Web: www.sdt.com.vn Email: support@sdt.com.vn
Hotlines: 093 2324 036 (HN-Dzung); 091 999 1188 (HCMC-Hung)

Subject to errors of typesetting, misprints and modifications.
Illustrations are generic and for reference only.

AGRU Kunststofftechnik GmbH
Ing.-Pesendorfer-Straße 31
4540 Bad Hall, Austria

T. +43 7258 7900
F. +43 7258 3863
office@agru.at



www.agru.at